

State of Wyoming Corner Record

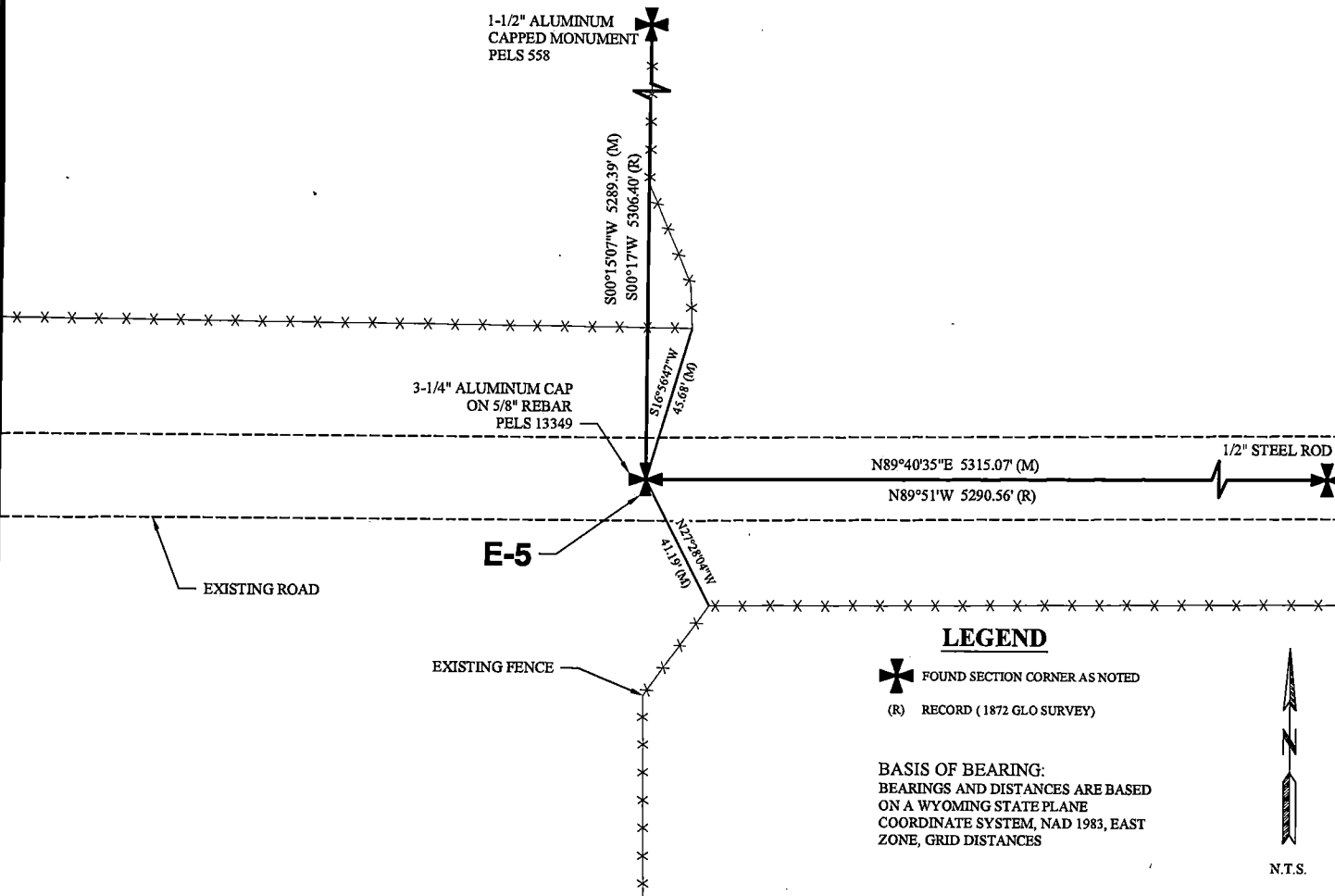
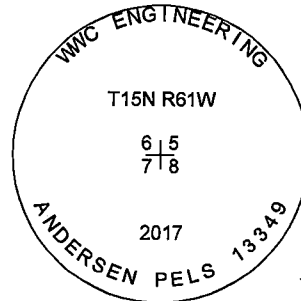
(In compliance with the CORNER PERPETUATION AND FILING ACT, Wyoming Statutes, 1997, Section 33-29-140, et seq., and the Rules and Regulations of the Board of Registration for Professional Engineers and Professional Land Surveyors)

Reverse side of this form may be used if more space is needed.

Record of original survey and citation of source of historical information (if corner is lost or obliterated.) Description of corner monumentation evidence found and/or monument and accessories established to perpetuate the location of this corner. Sketch of relative location of monument, accessories, and reference points with course and distance to adjacent corner(s) (if determined in this survey). Method and rationale for reestablishment of lost or obliterated corner.

EVIDENCE RECORD: 1872 GLO Survey: North between sections 7 & 8, 80.00 chains. Set sand stone 20"x12"x3" for corner to sections 5, 6, 7 & 8.

EVIDENCE FOUND: December 2017: Sand stone from 1872 GLO survey not found. Accepted intersection of north-south fence and east-west road as best available evidence for the corner to sections 5, 6, 7 & 8. Set a 3 1/4" aluminum cap marked as shown on a 5/8" rebar, 24" long, below road surface.



LEGEND

- FOUND SECTION CORNER AS NOTED
- (R) RECORD (1872 GLO SURVEY)

BASIS OF BEARING:
BEARINGS AND DISTANCES ARE BASED ON A WYOMING STATE PLANE COORDINATE SYSTEM, NAD 1983, EAST ZONE, GRID DISTANCES



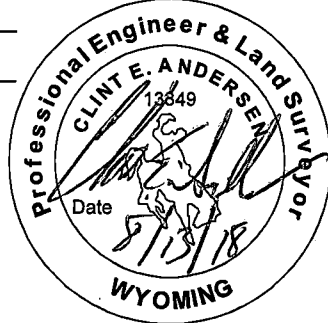
Date of Field Work: December 4, 2017 Office Reference: 2017-135

CROSS INDEX DIAGRAM

	1	2	3	4	5	6	7	8	9	10	11	12	13	14	15	16	17	18	19	20	21	22	23	24	25	
A																										A
B																										B
C				6			5				4				3				2						1	C
D																										D
E																										E
F																										F
G				7			8				9				10				11						12	G
H																										H
J																										J
K																										K
L				18			17				16				15				14						13	L
M																										M
N																										N
O																										O
P				19			20				21				22				23						24	P
Q																										Q
R																										R
S																										S
T				30			29				28				27				26						25	T
U																										U
V																										V
W																										W
X				31			32				33				34				35						36	X
Y																										Y
Z																										Z

Land Surveyor / Firm / Address
Clint E. Andersen
WWC Engineering
51 N. 15th Street, Suite 1
Billings, MT 59101
 Telephone: (406) 894-2210

This corner record was prepared by me or under my direction and supervision.
 SEAL & SIGNATURE



Corner Name: Northeast Corner Section: 7 T 15N R 61W ; 6TH P.M. Cross-Index No.: E-5

SBRPEPLS/PLSW: March 1994; PLSW January 1998